

SIGMA Optimization Pro

SIGMA Optimization Pro Instruction Manual

TABLE OF CONTENTS

TABLE OF CONTENTS	1
INTRODUCTION	2
WHAT YOU CAN DO IN SIGMA OPTIMIZATION PRO.....	2
NOTICES AND TRADEMARK	4
NOTICES	4
TRADEMARKS	4
INSTALLING THE SOFTWARE ONTO YOUR COMPUTER	5
SYSTEM REQUIREMENTS	5
INSTALLING AND UNINSTALLING SOFTWARE.....	6
STARTING AND CLOSING OF SOFTWARE	7
STARTING	7
CLOSING	7
DESCRIPTION OF THE PARTS	8
DESCRIPTION OF THE PARTS	8
CONNECTING THE PRODUCT	9
CONNECTING USB DOCK AND A LENS.....	9
CONNECTING THE MOUNT CONVERTER.....	11
CONNECTING FLASH USB DOCK AND AN EXTERNAL FLASH.....	13
HOME SCREEN	15
HOME SCREEN.....	15
PRODUCT INFORMATION	15
SERVICE MENU	15
HISTORY OF CONNECTED PRODUCTS WINDOW	16
HISTORY OF CONNECTED PRODUCTS WINDOW	16
EXPORT AND IMPORT HISTORY OF CONNECTED PRODUCTS	17
FIRMWARE UPDATE	18
FIRMWARE UPDATE	18
CUSTOMIZATION	19
CUSTOMIZATION MENU.....	19
FOCUS SETTING	20
FULL-TIME MF SETTING.....	22
AF FUNCTION BUTTON SETTING.....	24
CUSTOMIZATION MODE SETTING.....	26
AF SPEED SETTING.....	27
FOCUS LIMITER SETTING.....	29
OS SETTING.....	31
RESET ALL CUSTOMIZATION.....	33
COMBINATION WITH TELE CONVERTER.....	34
USB DOCK	35
USB DOCK.....	35
FIRMWARE UPDATE	36

INTRODUCTION

WHAT YOU CAN DO IN SIGMA OPTIMIZATION PRO

It is possible to do the following operations in Sigma Optimization Pro.

Lens firmware update

It is possible to update lens firmware to the latest version via the internet.

Lens data update for Mount Converter

It is possible to update lens data for the Mount Converter to the latest version via the internet.

Flash firmware update

It is possible to update external flash firmware to the latest version via the internet.

Lens customization (Except Cine lenses)

Focus Setting

For fixed focal length lenses, the focus can be adjusted at 4 shooting distances. For zoom lenses, the focus can be adjusted in a total of 16 distances (4 focusing distances x 4 shooting distances).

Full-time MF Setting

It is possible to select Full-time MF function (Manual Override) to ON or OFF, and adjust the timing to operate Full-time MF function.

AF Function button Setting

It is possible to customize the functionality of the AF Function button (Customization is possible for SIGMA and Nikon mount lenses which do not include an AF Function Button Switch. Canon mount lenses can be customized via the camera).

AF Speed Setting

It is possible to select 3 different AF speeds (only available on lenses with a custom mode switch).

Focus Limiter Setting

It is possible to adjust the range of the AF drive (only available on lenses with a custom mode switch).

OS Setting

For the Optical Stabilizer (OS), 3 unique view modes are available. This offers the most suited OS function for any shooting style (only available on lenses with a custom mode switch).

CAUTION !!

- To access information about firmware update and customization via the software, internet access is essential.
- To operate lens firmware update and customization via the software, the USB DOCK (sold separately) is required.
- USB DOCK is dedicated for each mount. Please use a USB DOCK which corresponds to your lens mount. USB DOCK for different mounts cannot be used.
- USB DOCK is not compatible with any mount adapters.
- Firmware updates and customization are only available on SIGMA's Art, Contemporary and Sports lenses via this software. Other SIGMA lenses and those from different manufacturers are not compatible with the software.
- To operate flash firmware updates using this software, the FLASH USB DOCK (sold separately) is required.
- The FLASH USB DOCK is dedicated to a specific mount. Please use the FLASH USB DOCK which corresponds to your flash. FLASH USB DOCK's for different mounts cannot be used.

NOTICES AND TRADEMARK

NOTICES

- It is forbidden to use the contents of this manual or commit other acts (including transfer, lease, duplication, alteration, use for public transmission, etc) without the prior approval from SIGMA.
- The contents of this manual are subject to change without notice.
- Although we have made all possible efforts to produce a very accurate manual, if you find any mistakes, please contact our customer support.
- No liability can be accepted for any errors.
- The specification and performance of this product are subject to change without notice.
- SIGMA does not take any responsibility for direct or indirect damage due to malfunction of software and hardware of your computer, any other peripheral devices, and network environment caused by using this software.

TRADEMARKS

- Microsoft and Windows are either registered trademarks or trademarks of Microsoft Corporation in the United States and/or other countries.
- Macintosh and MAC OS are registered trademarks or trademarks of Apple Inc. in the U.S.A. and /or other countries.
- All other company or product names used in documents are trademarks or registered trademarks of their respective holders.

INSTALLING THE SOFTWARE ONTO YOUR COMPUTER

SYSTEM REQUIREMENTS

Windows

This software, SIGMA Optimization Pro, operates in the condition that meets with the following criteria;

- Core2Duo or faster processor
- Windows 7, Windows 8.1 or Windows 10
- 1GB of RAM
- 1GB of available hard disk space
- 24bit or more graphics card
- 1024 x 768 or higher screen resolution
- PC with USB 1.1 port

Mac OS

This software, SIGMA Optimization Pro, operates in the condition that meets with the following criteria;

- macOS 10.13, 10.14 or 10.15 and Intel Core Processor
- 1GB of RAM
- 1GB of available hard disk space
- 24bit or more graphics card
- 1024 x 768 or higher screen resolution
- PC with USB 1.1 port

INSTALLING AND UNINSTALLING SOFTWARE

Windows

How to install

CAUTION !!

- If you have previous version of [SIGMA Optimization Pro] installed on your computer, uninstall it by using “Add or Remove Programs” on a computer. It is not possible to install [SIGMA Optimization Pro] properly if previous version of [SIGMA Optimization Pro] is already installed.

1. Please download the installer program according to instructions given on our website.
2. Double click on downloaded file [SOP_x.x.x_setup.exe] to start program installation.
3. First, you have to choose the language of the program you install. Select the language and push the OK button.
4. Then, carry out the install according to the procedures displayed in the screen.

How to uninstall

To uninstall the software, please uninstall it from Programs and Features in the Control Panel (for Windows 7).

Mac OS

How to install

CAUTION !!

- If previous version of [SIGMA Optimization Pro] already has been installed on your computer, please delete the [SIGMA Optimization Pro] folder in the “Application” folder before installing.

1. Please download the installer program according to instructions given on our website.
2. To start the installation drag and copy SIGMA Optimization Pro folder from [SIGMA Optimization Pro] Disk Image to applications folder. Installation will be complete after being copied to this folder.
3. Select and open the Applications folder from “Go” in the Finder menu.

How to uninstall

Drag and drop the SIGMA Optimization Pro icon in the Applications folder into the trash box.

STARTING AND CLOSING OF SOFTWARE

STARTING

Windows

Starting from the desktop

Please click on the shortcut icon of SIGMA Optimization Pro in the desktop.

(When SIGMA Optimization Pro is installed to your computer, the shortcut icon will be created in the desktop automatically.)

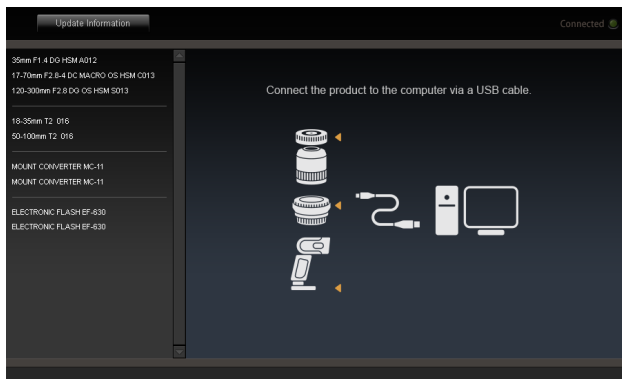
Starting from the Start Menu

1. Please open All Programs > [SIGMA] > [SIGMA Optimization Pro] from the Start Menu.
2. Click on [SIGMA Optimization Pro].

Mac OS

Starting from the Applications Menu

1. Open [SIGMA Optimization Pro] from [Applications].
2. Click on the [SIGMA Optimization Pro].



(Startup screen)

CLOSING

Windows

- Select [Exit] from the [File] menu in the Menu Bar.
- Click on the [Close] button in the Title Bar.

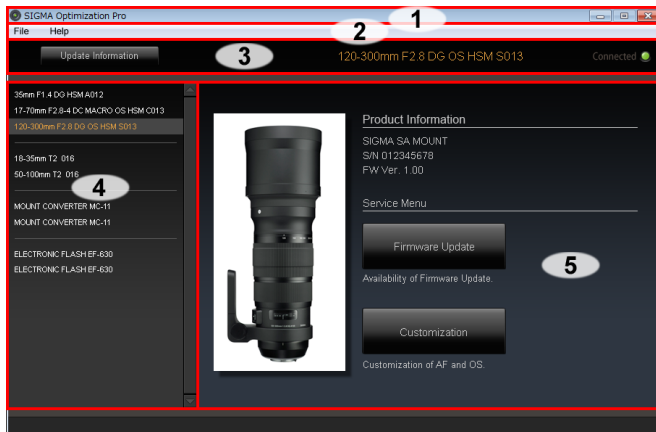
Mac OS

- Select [Exit] from [SIGMA Optimization Pro] menu in the Menu Bar.
- Click on the [close] button in the Title Bar.

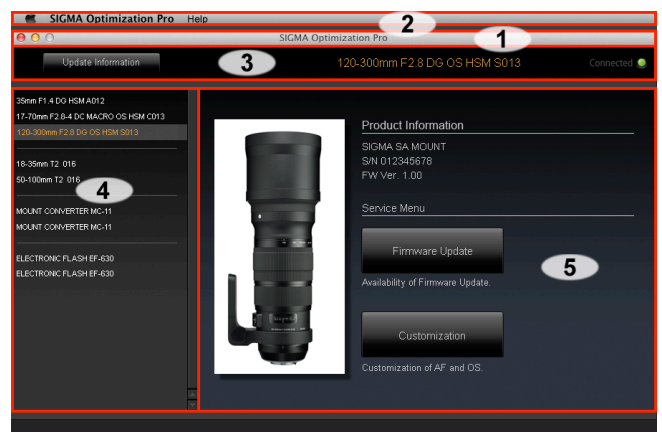
DESCRIPTION OF THE PARTS

DESCRIPTION OF THE PARTS

Windows



Mac OS



1. Title Bar

Software title, minimize button, and software quit button are positioned.

2. Menu Bar

It is possible to select the settings of each function from [File] and [Help].

3. Status Window

It shows the Name of the product presently connected to your computer and connection status of the product.

4. History of Connected Products Window

History of products connected to the computer will be shown here.

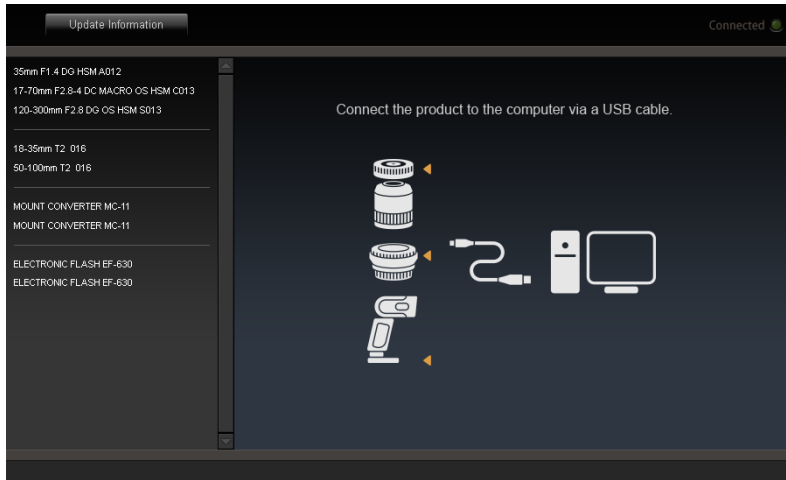
5. Main Window

Section for various operations. Depending on the selected function, this section will display different content.

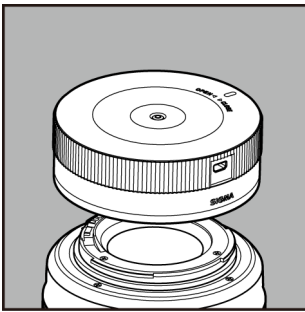
CONNECTING THE PRODUCT

CONNECTING USB DOCK AND A LENS

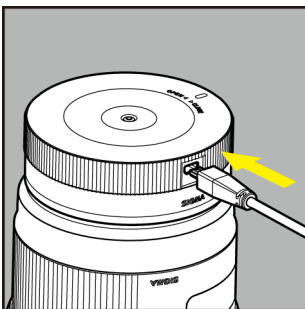
1. Open Sigma Optimization Pro software (How to connect products appears in the Main window).



2. Connect a lens to USB DOCK.



3. Connect USB DOCK and your computer using a USB cable.

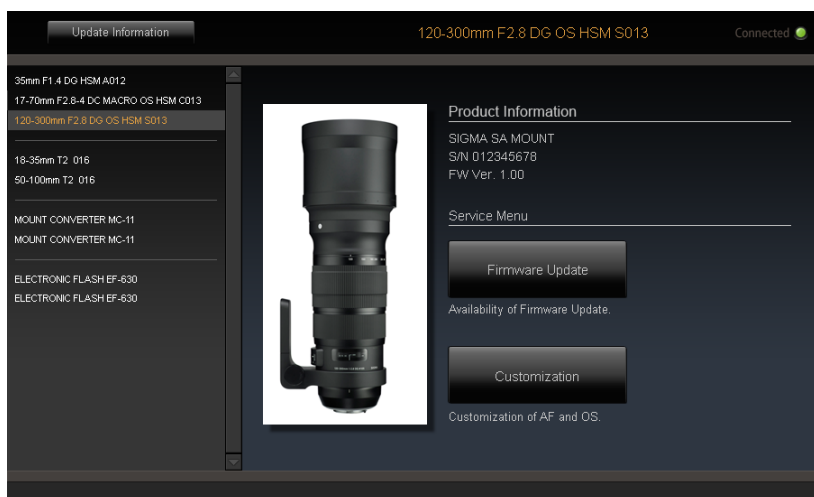


CAUTION !!

- Please position the lens with the front facing down on a stable surface. In the case of a large lens, please lay down the lens carefully and prevent it from falling over.
- Please use the dedicated USB cable supplied with USB DOCK. Using a different cable could cause a malfunction.

When the connection process is completed, the display will be as below.

- Main window becomes the Home screen.



(Home screen)

- The name of the connected lens appears in orange in the History of Connected Products window.
- The Name of the connected lens appears in orange in the Status window.
- The product connection lamp in the Status window turns on.



- LED lamp of USB DOCK turns on.

Memo

When a newer firmware version for the connected lens is available, the message [Latest firmware of the lens is available.] appears in the dialogue.

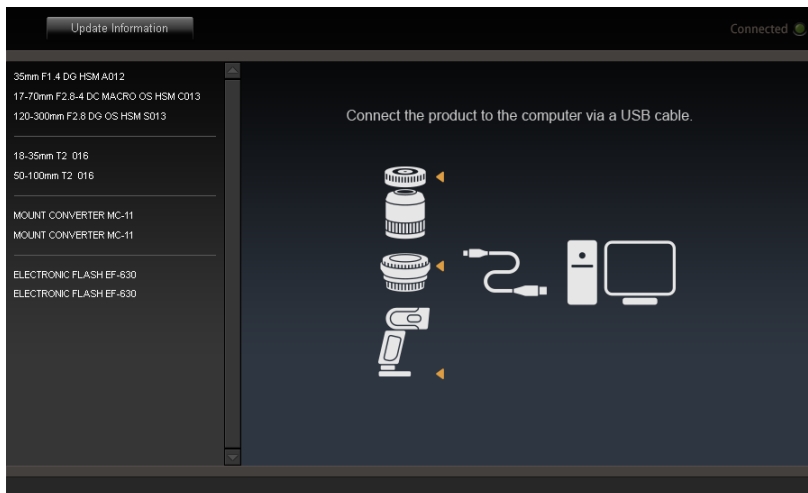
Please read the [FIRMWARE UPDATE] section for details about updating the firmware.

CAUTION !!

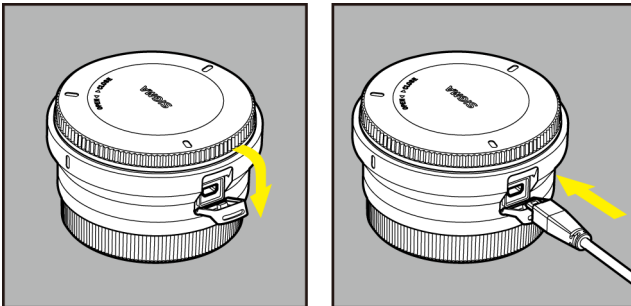
- Please do not connect more than one product (lens / mount converter / flash) to a computer at a time. It may lead to an improper operation.
- Customization is currently unavailable for Cine lenses. (The [Customization] button is grayed out and cannot be clicked.)

CONNECTING THE MOUNT CONVERTER

1. Open Sigma Optimization Pro software (How to connect products appears in the Main window).



2. Connect the mount converter to your computer via a USB cable.

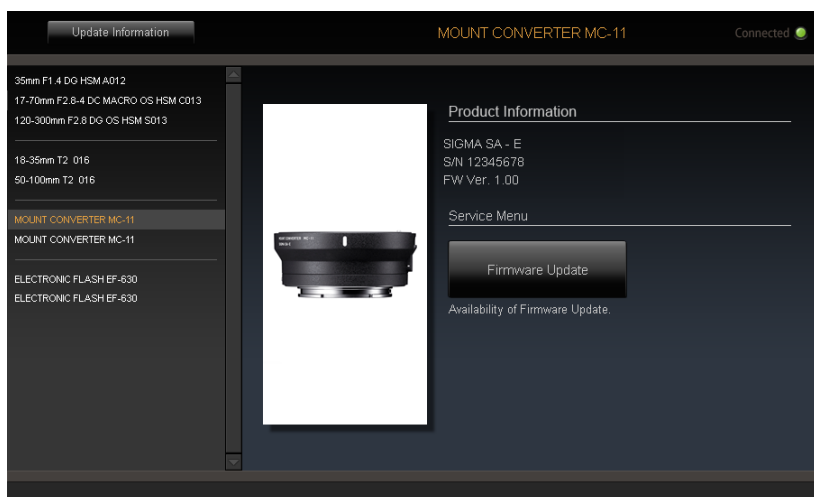


CAUTION !!

- Do not connect the mount converter when your computer is attached to cameras and lenses.
- Use the dedicated USB cable supplied with the mount converter. Using a different cable could cause a malfunction.

When the connection process is complete, the display will be as below.

- Main window becomes the Home screen.



(Home screen)

- The name of the connected mount converter appears in orange in the History of Connected Products window.
- The name of the connected mount converter appears in orange in the Status window.
- The product connection lamp in the Status window turns on.



- LED lamp of the mount converter turns on.

Memo

When a newer firmware version for the connected mount converter is available, the message [Latest firmware of the converter is available.] appears in the dialogue.

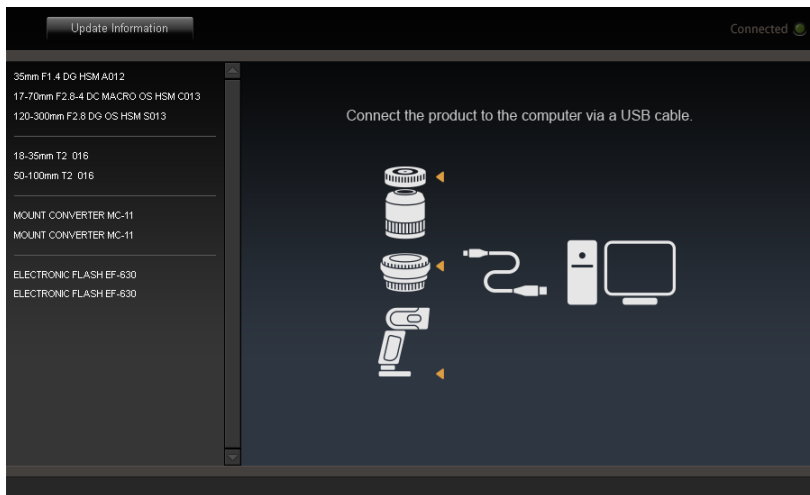
Please read the [FIRMWARE UPDATE] section for details about updating the firmware. (The explanation is about updating lens firmware, but the necessary steps are the same.)

CAUTION !!

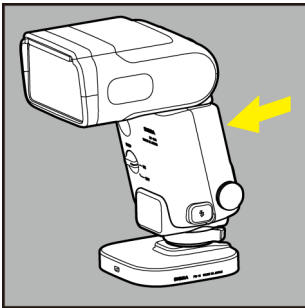
- Please do not connect more than one product (lens / mount converter / flash) to a computer at a time. It may lead to an improper operation.

CONNECTING FLASH USB DOCK AND AN EXTERNAL FLASH

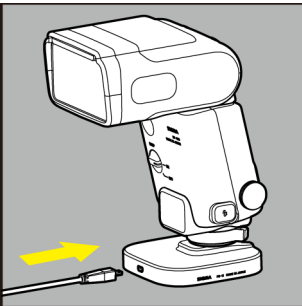
1. Open Sigma Optimization Pro software (How to connect products appears in the Main window).



2. Connect the external flash to the FLASH USB DOCK.



3. Connect FLASH USB DOCK and your computer via a USB cable.



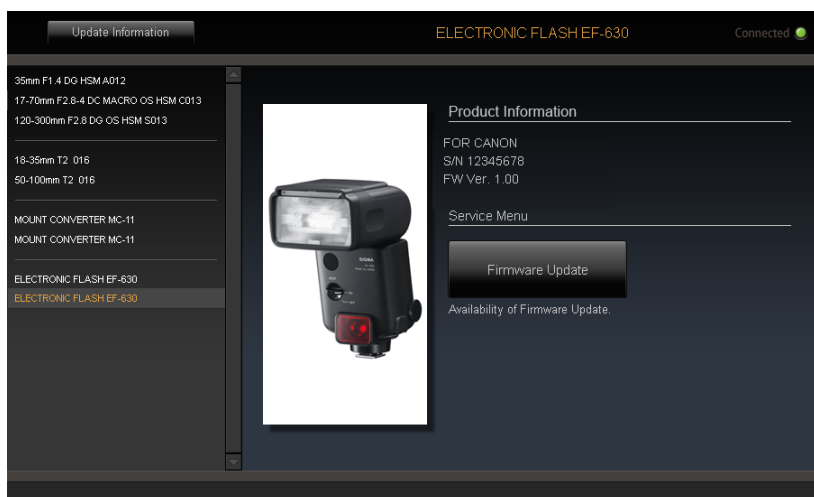
4. Turn on the external flash.

CAUTION !!

- Ensure the connected external flash has sufficient battery power.
- Please use the dedicated USB cable supplied with FLASH USB DOCK. Using a different cable could cause a malfunction.

When the connection process is complete, the display will be as below.

- Main window becomes the Home screen.



(Home screen)

- The name of the connected external flash appears in orange in the History of Connected Products window.
- The name of the connected external flash appears in orange in the Status window.
- The product connection lamp in the Status window turns on.



- The display screen of the external flash shows the message **[NOW CONNECTING]**.

Memo

When a newer firmware version for the connected external flash is available, the message [Latest firmware of the flash is available.] appears in the dialogue.

Please read the [FIRMWARE UPDATE] section for details about updating the firmware. (The explanation is about updating lens firmware, but the necessary steps are the same.)

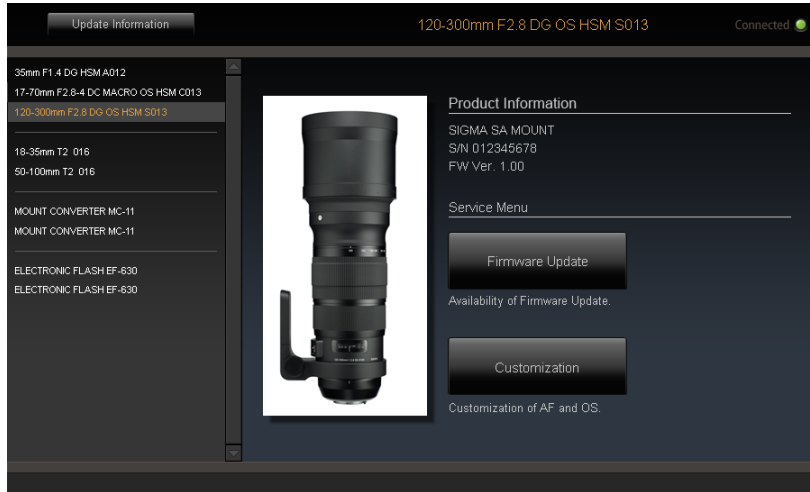
CAUTION !!

- Please do not connect more than one product (lens / mount converter / flash) to a computer at a time. It may lead to an improper operation.

HOME SCREEN

HOME SCREEN

- The [Product Information] field in the Home Screen provides the current setting of the connected product.
- From the [Service Menu] field in the Home Screen, it is possible to select various options for customization.



(Home Screen)

PRODUCT INFORMATION

The [Product Information] field in the Home Screen provides the current setting of the connected product. The following information about the connected product will be displayed.

- Mount
- Serial Number
- Firmware Version

SERVICE MENU

Firmware Update

Click the [Firmware Update] button and SIGMA Optimization Pro will start checking if a firmware update is available. If there is, it is possible to install the firmware update. (Refer to [FIRMWARE UPDATE] for further details).

Customization (Lens Only)

Click the [Customization] button, and the [Customization Menu] screen appears. From the [Customization Menu] screen, [Focus Setting], [Full-time MF Setting], [AF Function button Setting] and [Customization Mode Setting] are available. (Refer to [CUSTOMIZATION] section)

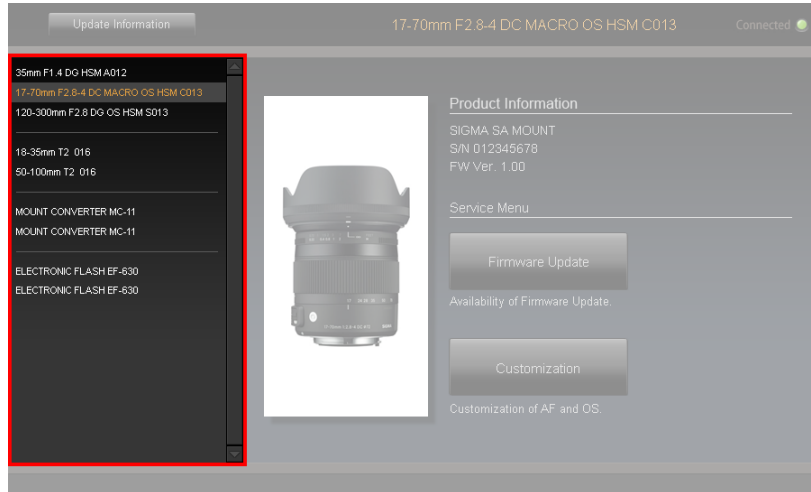
CAUTION !!

- Customization is currently unavailable for Cine lenses. (The [Customization] button is grayed out and cannot be clicked.)

HISTORY OF CONNECTED PRODUCTS WINDOW

HISTORY OF CONNECTED PRODUCTS WINDOW

The name of those products that have been previously connected to SIGMA Optimization Pro will appear in the [History of Connected Products] window. (The name of the product currently connected will appear in orange).



(History of Connected Products window)

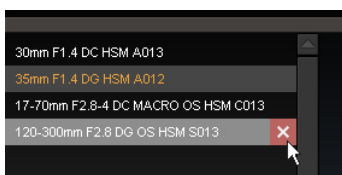
Memo

- The information of those lenses in the [History of Connected Products] window will be saved in the software, and it is possible to customize those items off-line.
- If you connect the same product with different mounts and serial numbers, each model will be listed separately under product name in the [History of Connected Products] window. In the Home Screen, the serial number and mount will be displayed in the [Home Screen].

Deleting History

It is possible to delete the name of the product in the “History of Connected Products” window.

1. Click the ✕ icon beside the name of the selected product.



2. Click [Yes] to delete, or [No] to cancel in the confirmation dialogue box.

CAUTION !!

- It is not possible to delete the product in orange color text from the window, as it is currently connected.
- Once the name of the lens in the window is deleted, off-line customization is no longer available for the product. It is necessary to revive the information of the lens through the internet if you wish to customize it off-line.

EXPORT AND IMPORT HISTORY OF CONNECTED PRODUCTS

Using the Export and Import History of Connected Products function makes it possible to backup History of Connected Products and to transfer History of Connected Products to another computer.

CAUTION !!

- Transferring the History of Connected Products file between different OS (Windows ↔ Mac OS) is not possible.
- History of Connected Products registered before the import will be overwritten upon the completion of the import.
- The messages [This import file is not compatible.] [Failed to import History of Connected Products.] appear in the dialogue when the import of History of Connected Products fails. Please check the file to import.
- Even if Export and Import History of Connected Products fails, History of Connected Products will not be removed.

Export History of Connected Products

1. Select [Export History of Connected Products] from [File] in the Menu Bar.
2. Insert a filename and click the [Save] button. The History of Connected Products file (filename extension [.hist]) appears in a selected folder.

Import History of Connected Products

1. Select [Import History of Connected Products] from [File] in the Menu Bar.
2. Select the applicable file from the folder where the file is saved, and click the [Open] button.
3. The confirmation dialogue [Replace History of Connected Products?] appears. To import, click [Yes] (History of Connected Products will be expanded in the software). To cancel, click [No].

FIRMWARE UPDATE

FIRMWARE UPDATE

A firmware update can improve performance of lenses. SIGMA Optimization Pro is the multipurpose software to satisfy photographers' preference.

Automatic Check for the Availability of the Latest Firmware

Start up the software and connect your lens with the computer. Then, SIGMA Optimization Pro automatically starts to check the availability of the latest firmware through the internet.

If the latest version is available, the dialog box shows [Latest firmware of the lens is available.].

For the detailed information of firmware update, click the [Detailed information]. When you start the update, click [Yes], and when you do it later, click the [Later].

To start the update, click [Yes] and follow the instructions in the dialog box.

Manual Check for the Availability of the Latest Firmware

Click [Firmware Update] in the Home Screen. Then, SIGMA Optimization Pro starts to check the availability of the latest firmware through the internet.

If the latest version is available, the dialog box shows [Latest firmware of the lens is available.].

For the detailed information of firmware update, click the [Detailed information]. When you start the update, click [Yes], and when you do it later, click the [Later].

To start the update, click [Yes] and follow the instructions in the dialog box.

CAUTION !!

- Do not remove the lens or press the detachment button while updating firmware.
- Do not turn off the computer while updating firmware.
- Do not customize or change the current setting of the lens while updating firmware.
- To ensure the performance of the computer, use a fully charged battery or connect to an AC adapter while using this software.
- When the dialog box shows [Cannot connect to the server...], make sure that the computer has internet access.

Should the firmware update not finish successfully

If the firmware update does not finish successfully, the dialog box shows [Firmware update is incomplete....].

Remove the lens and execute the recovery work as instructed in the dialog box.

Should the recovery process fail, contact your nearest Sigma authorized service station.

Memo

Click [Update Information] in the Status Window and it displays the webpage for SIGMA Optimization Pro Download in the Sigma website. Update information for the connected lens and other lenses is available.

CUSTOMIZATION

CUSTOMIZATION MENU

From the [Customization Menu] screen, [Focus Setting], [Full-time MF Setting], [AF Function button Setting] and [Customization Mode Setting] are available.



(Customization Menu Screen)

Focus Setting

To set the AF focusing position.

Full-time MF Setting

It is possible to select Full-time MF function (Manual Override) to ON or OFF, and adjust the timing to operate Full-time MF function.

AF Function button Setting

It is possible to customize the functionality of the AF Function button (Customization is possible for SIGMA and Nikon mount lenses which do not include an AF Function Button Switch. Canon mount lenses can be customized via the camera).

Customization Mode Setting

It is possible to save 2 sets of the customization status in [C1] and [C2].

CAUTION !!

- If the text appears in gray, it means the customization is unavailable.
- Customization is currently unavailable for Cine lenses. (The [Customization] button is grayed out and cannot be clicked.)

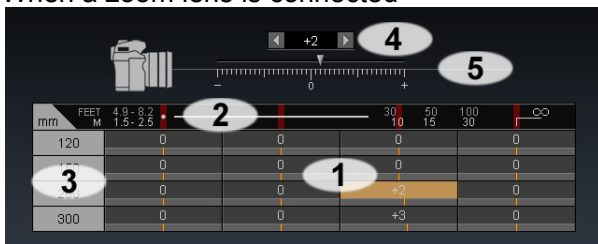
FOCUS SETTING

For fixed focal length lenses, the focus can be adjusted at 4 shooting distances. For zoom lenses, the focus can be adjusted in a total of 16 distances (4 focusing distances x 4 shooting distances).

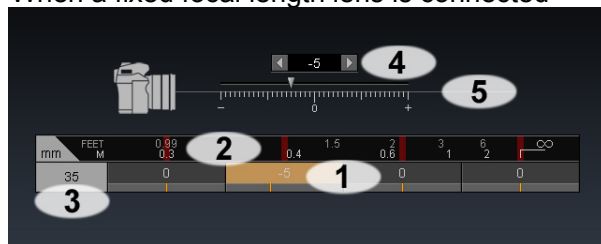


(Focus Setting Screen)

When a zoom lens is connected



When a fixed focal length lens is connected



1. Cell
2. Shooting Distance
3. Focal Length
4. Spin Box
5. Slider

1. Open the Focus Setting Screen (Click [Customization] in the Home Screen > Click [Focus Setting] in the Customization Menu Screen).
2. Select the desired cell for the focus setting you wish to customize (For instance, select the cell, as shown below, if Focal Length 150mm and Shooting Distance around 10m is preferable).

mm	FEET	4.9-8.2	1.5-2.5	30	50	100	∞
120	0	0	0	0	0	0	0
150	0	0	0	0	0	0	0
200	0	0	0	0	0	0	0
300	0	0	0	0	0	0	0

3. When you adjust the value, click the ◀▶ buttons in the spin box, or drag the ▼ button of the slider (Shifting focusing towards the front requires “-” side, while back focusing orientation requires “+” side).
4. Click the [Rewriting] button and the dialog box for confirmation will appear.
5. Carefully read the content in the dialog box, and click [Agree] to process the customization, or click [Return] to not process the customization.

6. Once the rewriting finishes, the dialog box for confirmation appears. Then, click [Close] and remove the lens.
7. After customization, please check the performance of the lens by test shooting. If necessary, connect the lens again to have further customization.

CAUTION !!

- Do not remove the lens or press the detachment button while updating firmware.
- Do not turn off the computer while updating firmware.
- Do not customize or change the current setting of the lens while updating firmware.
- In case updating firmware finishes unsuccessfully, a message [Rewriting the setting of the lens is incomplete.] appears in the dialog box. Follow the instructions [RESET ALL CUSTOMIZATION] and proceed resetting the customization.

To Reset the Customization

1. Click [Reset to Default] and the confirmation dialog box will appear.
2. Click [Yes] and all values become 0.
3. Click the [Rewriting] button and the dialog box for confirmation will appear.
4. Carefully read the content in the dialog box, and click [Agree] to process the customization, or click [Return] to not process the customization.
5. Once the rewriting finishes, the dialog box for confirmation appears. Then, click [Close] and remove the lens.

FULL-TIME MF SETTING

It is possible to select Full-time MF function (Manual Override) to ON or OFF, and adjust the timing to operate Full-time MF function.



(Full-time MF Setting Screen)

Setting Full-time MF function ON / OFF

It is possible to select the Full-time MF function to ON or OFF. (When the shutter button is half-pressed while auto focusing is in operation, Full-time MF is activated by rotating the focus ring.)

CAUTION !!

- For lenses that do not have [MO] mode in the Focus Mode Switch, there is a difference in the default setting of Full-time MF function for each mount.

Default setting of Full-time MF function	Mount
ON [Full-time MF ON]	SIGMA, NIKON, SONY
OFF [Full-time MF OFF]	CANON, PENTAX

- For lenses that include [MO] mode in the Focus Mode Switch, it is possible to deactivate the Full-time MF function from this software when set at [MO] mode.

1. Open the Full-time MF Setting Screen (Click [Customization] in the Home Screen > Click [Full-time MF Setting] in the Customization Menu Screen).
2. To activate the function, please click the button [Full-time MF ON], or select [Full-time MF OFF] to deactivate it.
3. Click the [Rewriting] button and the dialog box for confirmation will appear.
4. Carefully read the content in the dialog box, and click [Agree] to process the customization, or click [Return] to not process the customization.
5. Once the rewriting finishes, the dialog box for confirmation appears. Then, click [Close] and remove the lens.



CAUTION !!

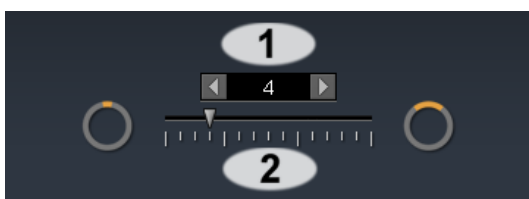
- Do not remove the lens or press the detachment button while updating firmware.
- Do not turn off the computer while updating firmware.

- Do not customize or change the current setting of the lens while updating firmware.
- In case updating firmware finishes unsuccessfully, a message [Rewriting the setting of the lens is incomplete.] appears in the dialog box. Follow the instructions [RESET ALL CUSTOMIZATION] and proceed resetting the customization.

Adjust Timing to Operate Full-time MF Function

It is possible to adjust the timing to operate the Full-time MF function by customizing how much rotation of the focus ring is required.

1. In the Full-time MF Setting Screen, click [Full-time MF ON] to activate the function. (For SIGMA, NIKON and SONY, it is activated by default.)
2. When you adjust the value, click the ◀▶ buttons in the spin box, or drag the ▼ button of the slider (Adjust the value toward  for less, and toward  for more rotation.).



1. Spin Box 2. Slider

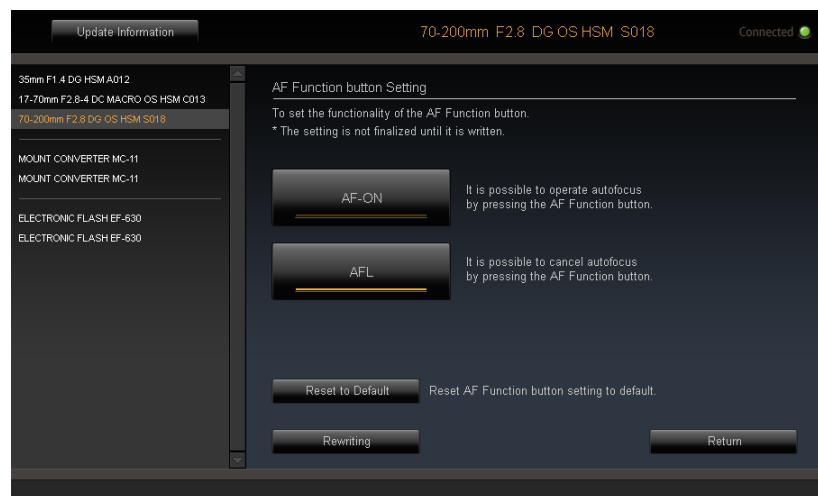
- It is possible to return to the default setting by clicking on the [Reset to Default] button. (Default setting may vary from lens to lens.)
3. Click the [Rewriting] button and the dialog box for confirmation will appear.
 4. Carefully read the content in the dialog box, and click [Agree] to process the customization, or click [Return] to not process the customization.
 5. Once the rewriting finishes, the dialog box for confirmation appears. Then, click [Close] and remove the lens.
 6. Attach the lens to your camera body, and check the operation. If necessary, connect the lens again to have further customization.

CAUTION !!

- Do not remove the lens or press the detachment button while updating firmware.
- Do not turn off the computer while updating firmware.
- Do not customize or change the current setting of the lens while updating firmware.
- In case updating firmware finishes unsuccessfully, a message [Rewriting the setting of the lens is incomplete.] appears in the dialog box. Follow the instructions [RESET ALL CUSTOMIZATION] and proceed resetting the customization.

AF FUNCTION BUTTON SETTING

It is possible to customize the functionality of the AF Function button (Customization is possible for SIGMA and Nikon mount lenses which do not include an AF Function Button Switch. Canon mount lenses can be customized via the camera).



(AF Function button Setting Screen)

1. Open the AF Function button Setting Screen (Click [Customization] in the Home Screen > Click [AF Function button Setting] in the Customization Menu Screen).

2. Select the desired function to assign to the AF Function button

AF-ON

It is possible to operate autofocus by pressing the AF Function button.

AFL

It is possible to cancel autofocus by pressing the AF Function button.

- It is possible to return to the default setting by clicking on the [Reset to Default] button. (Default setting may vary from lens to lens.)

3. Click the [Rewriting] button and the dialog box for confirmation will appear.

4. Carefully read the content in the dialog box, and click [Agree] to process the customization, or click [Return] to not process the customization.

5. Once the rewriting finishes, the dialog box for confirmation appears. Then, click [Close] and remove the lens.

CAUTION !!

- Do not remove the lens or press the detachment button while updating firmware.
- Do not turn off the computer while updating firmware.
- Do not customize or change the current setting of the lens while updating firmware.
- In case updating firmware finishes unsuccessfully, a message [Rewriting the setting of the lens is incomplete.] appears in the dialog box. Follow the instructions [RESET ALL CUSTOMIZATION] and proceed resetting the customization.

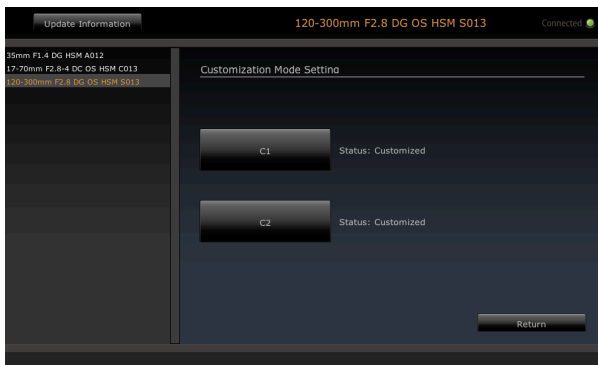
Notes for Nikon mount

For some cameras, it is possible to customize the functionality of the AF Function button from the camera menu. If the AF Function button setting is adjusted via this software, it will work as follows;

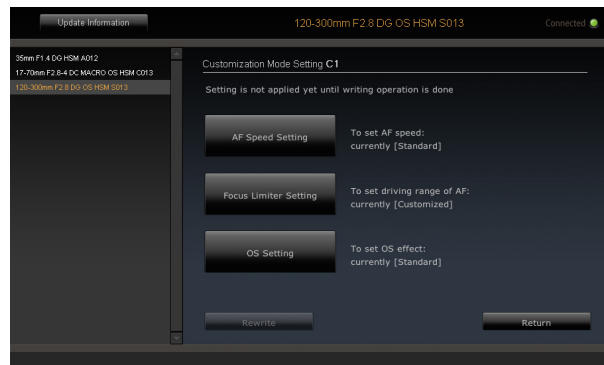
- When set to **[AFL]**, the AF Function button offers the function selected from the camera body.
- When set to **[AF-ON]**, the AF Function button works as **[AF-ON]** regardless of the setting from the camera body.

CUSTOMIZATION MODE SETTING

For the lenses that have a customization mode switch, SIGMA Optimization Pro can offer further varieties of customization.



(Customization Mode Setting Screen)



(Customization Mode Setting **C1** (**C2**) Screen)

It is possible to save 2 sets of the customization status in **[C1]** and **[C2]**.

At the flick of the Custom Mode Switch on the lens, it is possible to apply the saved setting on the lens at **[C1]** and **[C2]**.

The following are the functions offered for further customization.

- AF Speed Setting
- Focus Limiter Setting
- OS Setting

CAUTION !!

- If the text appears in gray, it means the customization is unavailable.

Customization Mode: The Sequence of Registration

The following are the steps to customize functions such as [AF Speed Setting], [Focus Limiter Setting] and [OS Setting].

Click the [Customization] in the Home Screen.

↓

Click the [Customization Mode Setting] in the Customization Menu Screen.

↓

Select either **[C1]** or **[C2]** to save the customization in the Customization Mode Setting Screen.

↓

In the selected Customization Mode Setting, click [AF Speed Setting], [Focus Limiter Setting] or [OS Setting].

↓

Customize the lens to reflect the preference, and click [OK] once it is finished.

↓

In the selected Customization Mode Setting, click [Rewriting] to process the customization.

↓

Click [Agree] in the dialog box.

↓

Click [Close] and remove the lens once the rewriting has finished successfully.

AF SPEED SETTING

It is possible to select 3 different AF speeds (only available on lenses with a custom mode switch).



(AF Speed Setting Screen)

1. Select the AF Speed Setting.

Click on [Customization] in the Home screen > [Customization Mode Setting] in the Customization Menu > click on [C1] or [C2] in Customization Mode Setting > Click [AF Speed Setting] in the C1 or C2 screen.

2. Select the desired mode.

Fast AF Priority

Prioritize autofocus speed to reach the focus point as quickly as possible.

Standard AF

Default setting achieves both smooth operation and fast AF speed.

Smooth AF Priority

Prioritize smooth autofocussing. Offering a slightly slower but very smooth autofocus, ideal for use with video.

CAUTION !!

- Selectable mode depends on mounted lens.

3. Click on [OK] to go back to Customization Mode Setting C1 (or C2).

4. Click the [Rewriting] button and the dialog box for confirmation will appear.

5. Carefully read the content in the dialog box, and click [Agree] to process the customization, or click [Return] to not process the customization.

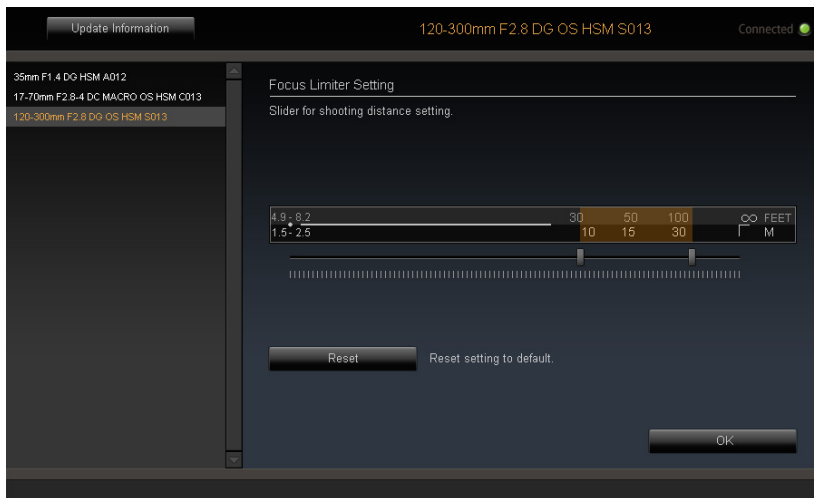
6. Once the rewriting finishes, the dialog box for confirmation appears. Then, click [Close] and remove the lens.

CAUTION !!

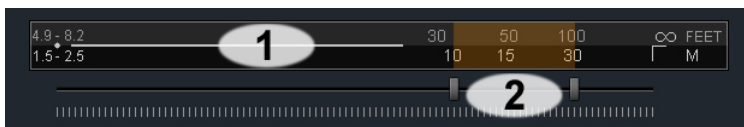
- Do not remove the lens or press the detachment button while updating firmware.
- Do not turn off the computer while updating firmware.
- Do not customize or change the current setting of the lens while updating firmware.
- In case updating firmware finishes unsuccessfully, a message [Rewriting the setting of the lens is incomplete.] appears in the dialog box. Follow the instructions [RESET ALL CUSTOMIZATION] and proceed resetting the customization.

FOCUS LIMITER SETTING

It is possible to adjust the range of the AF drive (only available on lenses with a custom mode switch).



(Focus Limiter Setting Screen)



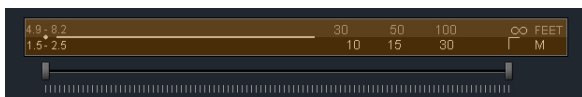
1. Shooting distance
2. Slider

1. Select the Focus Limiter Setting.

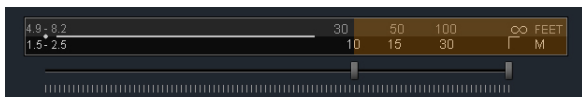
Click on [Customization] in the Home screen > [Customization Mode Setting] in the Customization Menu > click on [C1] or [C2] in Customization Mode Setting > Click [Focus Limiter Setting] in the C1 or C2 screen.

2. Set the range of the AF drive with two sliders (the driving range of AF is highlighted in orange).

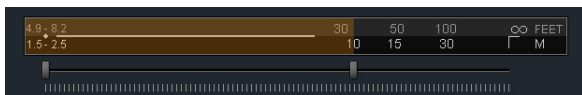
Example



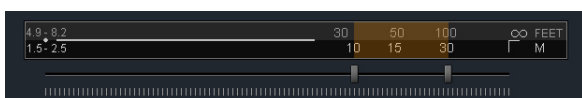
Full range



10m ~ ∞



Minimum ~ 10m



10m ~ 30m

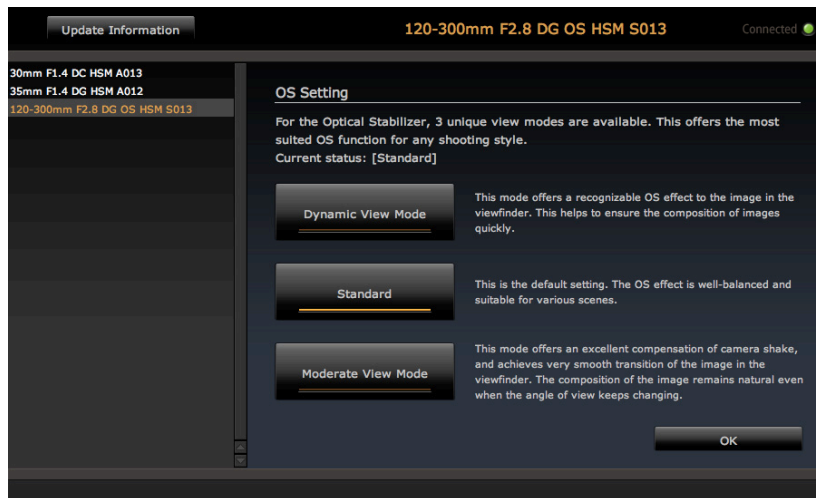
3. Click on [OK] to go back to Customization Mode Setting C1 (or C2).
 4. Click the [Rewriting] button and the dialog box for confirmation will appear.
 5. Carefully read the content in the dialog box, and click [Agree] to process the customization, or click [Return] to not process the customization.
 6. Once the rewriting finishes, the dialog box for confirmation appears. Then, click [Close] and remove the lens.
- It is possible to return to the default setting (the range of the AF drive is set to the full range) by clicking on the [Reset] button.

CAUTION !!

- The setting of SIGMA Optimization Pro is prioritized and the focus limiter switch which is incorporated in the lens is disabled when the Customization mode is effective.
- Do not remove the lens or press the detachment button while updating firmware.
- Do not turn off the computer while updating firmware.
- Do not customize or change the current setting of the lens while updating firmware.
- In case updating firmware finishes unsuccessfully, a message [Rewriting the setting of the lens is incomplete.] appears in the dialog box. Follow the instructions [RESET ALL CUSTOMIZATION] and proceed resetting the customization.

OS SETTING

For the Optical Stabilizer (OS), 3 unique view modes are available. This offers the most suited OS function for any shooting style (only available on lenses with a custom mode switch).



(OS setting screen)

1. Select the OS setting.

Click on [Customization] in the Home screen > [Customization Mode Setting] in the Customization Menu > click on [C1] or [C2] in Customization Mode Setting > Click [OS Setting] in the C1 or C2 screen.

2. Select the desired mode.

Dynamic View Mode

This mode offers a recognizable OS effect to the image in the viewfinder. This helps to ensure the composition of images quickly.

Standard

This is the default setting. The OS effect is well-balanced and suitable for various scenes.

Moderate View Mode

This mode offers an excellent compensation of camera shake, and achieves very smooth transition of the image in the viewfinder. The composition of the image remains natural even when the angle of view keeps changing.

CAUTION !!

- Selectable mode depends on mounted lens.

3. Click on [OK] to go back to Customization Mode Setting C1 (or C2).

4. Click the [Rewriting] button and the dialog box for confirmation will appear.

5. Carefully read the content in the dialog box, and click [Agree] to process the customization, or click [Return] to not process the customization.

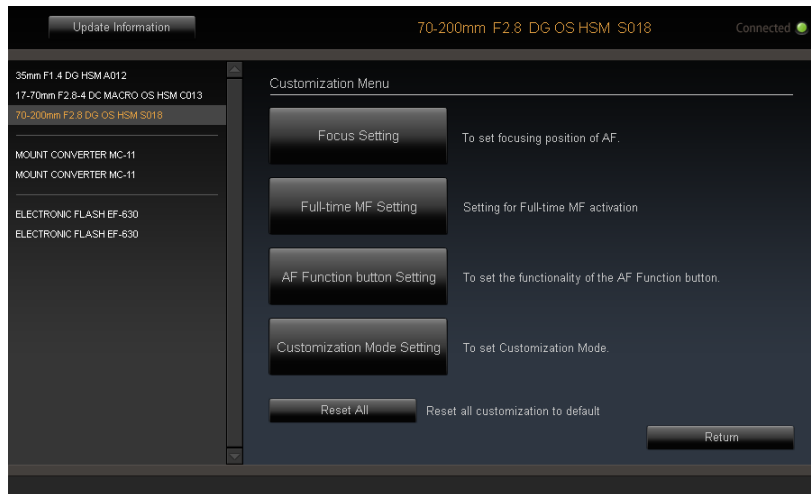
6. Once the rewriting finishes, the dialog box for confirmation appears. Then, click [Close] and remove the lens.

CAUTION !!

- Do not remove the lens or press the detachment button while updating firmware.
- Do not turn off the computer while updating firmware.
- Do not customize or change the current setting of the lens while updating firmware.
- In case updating firmware finishes unsuccessfully, a message [Rewriting the setting of the lens is incomplete.] appears in the dialog box. Follow the instructions [RESET ALL CUSTOMIZATION] and proceed resetting the customization.

RESET ALL CUSTOMIZATION

It is possible to reset all the changed settings in the [Focus Setting], [Full-time MF Setting], [AF Function button Setting] and the [Customization Mode Setting] to default. When the rewriting process does not finish successfully, it is required to reset all the customization.



(Customization Menu Screen)

1. Click [Reset All] and the confirmation dialog box will appear.
2. Click [Yes] and the confirmation dialog box will appear again.
3. Carefully read the content in the dialog box, and click [Agree] to reset, or click [Return] to not process it.
4. Once it finishes resetting, the confirmation dialog box will appear. Then, click [Close] and remove the lens.

CAUTION!!

- While it is possible to reset all the customized settings to default, once it is updated, this function does not downgrade the firmware to the previous version.

COMBINATION WITH TELE CONVERTER

Cautions for customization of lenses that corresponds to SIGMA APO TELE CONVERTER EX DG (herein after, Tele Converter) will be explained as below.

When a lens attached to a Tele Converter is connected, the name of the lens that will be shown on Status Window, as well as History of Connected Lens Window will appear and be recognized as a different lens as below.

In case of 120-300mm F2.8 DG OS HSM S013

Lens only	120-300mm F2.8 DG OS HSM S013
Tele Converter 1.4x attached	120-300mm F2.8 DG OS HSM S013 (1.4x)
Tele Converter 2x attached	120-300mm F2.8 DG OS HSM S013 (2x)

Focus setting

Focus setting data will be saved in the CPU of the lens as [Lens only], [Tele Converter 1.4x attached], and [Tele Converter 2x attached]. Therefore, focus setting should be processed using each combination, according to the condition of use.

For example, if focus setting of a lens was only processed as [Lens only], when you use the lens with Tele Converter 1.4x, the adjusted value that was processed as [Lens only] will not be reflected, and auto focusing will operate unadjusted.

Other customization

What you can set on Customization mode (AF Speed Setting, Focus Limiter setting, OS Setting) remain the same regardless of whether the lens is attached or not attached to the Tele Converter.

USB DOCK

- To operate lens firmware updates and customization using this software, the available USB DOCK is required.
- USB DOCK is dedicated for each mount. Please use a USB DOCK which corresponds to your lens mount. USB DOCK for different mounts cannot be used.

LED lamp

It is possible to confirm the connection status to your computer from the light of the LED lamp embedded to the USB DOCK.

- Lights-out : Only the USB DOCK is connected to your computer.
- Lighting : The lens and the USB DOCK are connected to your computer.
- Blinking : The USB DOCK is rewriting the firmware of the lens or reading the information from the lens.

CAUTION !!

- Do not do following acts while the LED lamp is blinking. It could cause the damage to your lens and USB Dock.
 - Remove the lens from the USB DOCK.
 - Remove the USB cable.
 - Turn off the computer.

Confirmation of the USB DOCK information

It is possible to confirm your USB DOCK information by selecting the [USB Dock Information] from [File] in the menu bar and display the USB DOCK information.

It is possible to confirm the following information in USB Dock Information screen.

- Mount
- Firmware version

FIRMWARE UPDATE

CPU of the USB DOCK equips the firmware to operate the USB DOCK. Firmware of the USB DOCK will be updated for improvement of stability, correction of error and being compatible with new lenses. It is possible to update the firmware through the Internet via SIGMA Optimization Pro.

Confirm the latest firmware automatically

Sigma Optimization Pro confirms if the latest firmware is available automatically through the Internet when you connect the USB DOCK to your computer and run the software.

If newer firmware is available for the USB DOCK, [Latest firmware for USB Dock is available...] will be displayed in the dialog.

To update the firmware immediately, please click on [Yes]. If you don't wish to update the firmware immediately, please click on [Later].

To start the update, click [Yes] and follow the instructions in the dialog box.

Confirm the latest firmware manually

It is possible to confirm if the latest firmware is available by clicking on [Availability of latest firmware] in the USB Dock Information screen by connecting the USB DOCK to your computer.

If newer firmware is available for the USB DOCK, [Latest firmware for USB Dock is available...] will be displayed in the dialog.

To update the firmware immediately, please click on [Yes]. If you don't wish to update the firmware immediately, please click on [Later].

To start the update, click [Yes] and follow the instructions in the dialog box.

CAUTION !!

- Do not turn off the computer while updating firmware.
- To ensure the performance of the computer, use a fully charged battery or connect to an AC adapter while using this software.
- When the dialog box shows [Cannot connect to the server...], make sure that the computer has internet access.
- We recommend you to update to the latest firmware. Old firmware could cause failure of firmware updates to the lens and customization.